

Victoria Park Plaza, London

14th May 2008

Rehabilitation First Forum 2008

www.postevents.co.uk/rehabilitationfirstforum

Reaching for Change

- **Lord McKenzie of the DWP and Stephen Haddrill of the ABI** will update you on the government's plans for vocational rehabilitation
- Demonstrate ROI through **effective cost benefit analysis**
- Hear the latest innovations and updates in the field of **rehabilitation services and available care** and find out how these will benefit the claims process
- APIL have recently released their **best practice guide to rehabilitation**. Find out what practical implications this will have for your business
- Discuss the latest innovations in the treatment of mental health issues and discover the **cost saving potential** behind early rehabilitative intervention

EVENT PARTNER

AIG Medical & Rehabilitation

An  **incisive media** event
incisive-events.com

SPONSORS

Corpore 

This event has been credited by the CII and can be included as part of your CII CPD requirement should you consider it relevant to your professional development needs.



SAVE

Book by 25th April 2008 to benefit from a £100 discount.
Call Oliver Nevill on 020 7316 9405
or book online at postevents.co.uk

This event
has been
Carbon
Offset

POST
EVENTS
Be there.

Expert speakers include:

LORD MCKENZIE OF LUTON,
minister for health and work,
Department for Work and Pensions

STEPHEN HADDRILL,
director general, ABI

AMANDA STEVENS,
vice-president, APIL

GAIL KOVACS,
vice-chair, VRA

JONATHAN COOK,
chairman, The Treatment Network

KAREN HUNT,
employment services manager, HCML



Welcome

Victoria Park Plaza, London
14th May 2008

Rehabilitation First Forum 2008



Dear Delegate

This year sees the launch of the new Rehabilitation First Forum. The rehabilitation sector is continuing to make significant progress and this new, innovative event is designed to enable delegates to build upon this success.

With the ABI working closely with the government, and APIL and the VRA publishing new best practice guides and standards, things in the sector look set to change. It is imperative that you and your business keep abreast of these advances.

With much more opportunity for open discussion, debate and interaction, Post's **Rehabilitation First Forum** will provide you with expert presentations that will enable you to:

- Discuss the **future of vocational rehabilitation** with those that have the power to make changes
- Compare your own strategies for **calculating cost benefit analysis** with another leading insurer
- Hear the **latest updates from APIL and the VRA** on their rehabilitation best practice guide and standards publications
- Find out about the **latest innovations and advances** in the field of available care

This event promises to provide delegates with the very latest information on standards, technological and procedural advances and many other issues that are at the heart of the rehabilitation sector. So book now to ensure you don't miss out on this must-attend event.

We look forward to seeing you at the forum in May.



Ant Gould
Chairman,
**Rehabilitation
First Forum**



Who should attend:

- Liability claims managers
- Liability claims technicians
- Personal injury claims handlers
- PHI/income replacement specialists
- Commercial lines brokers
- Case managers
- Rehabilitation service providers
- Relevant medical specialists
- Rehabilitation specialists
- Defendant solicitors
- Claimant solicitors

Who attended last year:

ABI
AIG Europe
AIG Medical & Rehabilitation
Axa Insurance
Barlow Lyde & Gilbert
Brit Insurance
BUPA Recover
Bush & Company
Cooperative Insurance Society
Corpore
Creditor Health Department
CTCM
Cunningham Lindsey UK
Destiny Legal Service
Docleaf
DPP
DWF Solicitors
Eagle Star Insurance Company
Ireland
First Assist
First Assist Insurance
Fortis Insurance
Fit For Work
Garwyn
Handley Brown
Harrison Associates
HCML

Health and Protection Solutions
Henmans
Hill Dickinson
HJS Personnel Services
Hugh James Solicitors
Human Focus – return to Work
Independent Living Solutions
ISO
Knight Rehabilitation
Kynixia
Lifecare Health
Lyons Davidson Solicitors
Medicals Direct Group
Mitsui Marine International
Motor Insurers Burea
Moving Minds
NFU Mutual
Nordben, Life and Pensions
Insurance
Norwich Union Healthcare
Parabis Consulting
Personal Injury Medical Services
Premex
Proclaim Care
QBE Insurance Europe
Reach Personal Injury Services
Rehabilitation Specialists
Rehabworks
Remploy
Resolution Alliance
Roger Rich & Co
Royal & Sun Alliance
RTW Plus
Rubicon Corporation
Speed Medical Examination
Services
St Paul Travelers
The Medisure Group
The Treatment Network
Unum Provident Weightmans
Zurich Insurance

Programme

Morning

Victoria Park Plaza, London
14th May 2008

Rehabilitation
First Forum 2008



ROOM 1

ROOM 2

ROOM 3

8.30am Registration

9.25am Chairman's welcome

9.30am Introduction from **Melanie Summers, managing director, AIG Medical & Rehabilitation**

9.35am Where will vocational rehabilitation go from here? A government perspective

In June 2007, the DWP announced it was launching a new vocational rehabilitation task group with a focus on encouraging employers to do more to support ill or injured employees in returning to work. This task group is seeking to identify what services are currently available, the reasons why businesses do not offer more support, and what more can be done to increase understanding of rehabilitation services. Discover the latest findings from this research, and hear more on the government's stance on vocational rehabilitation

Speaker: Lord McKenzie of Luton, minister for health and work, Department for Work and Pensions

9.55am How can we encourage uptake of rehabilitation services amongst employers?

It is imperative that rehabilitation be recognised by companies as one of the most effective tools they have to combat absenteeism and the increased costs that go with it. Hear the latest update from the ABI on the findings of their research into how best to embed the concept of rehabilitation in the employer consciousness, particularly within the SME market.

Speaker: Stephen Haddrill, director general, ABI

10.15am Questions, comments and observations

10.30am Morning coffee break

10.50am

Workshop A

Discuss the implications for claims managers of APIL's new best practice guide

- What will the newly published best practice guide mean for the legal and insurance industries?
- What effect will it have on the claims process in the future?
- Have the chance to voice your own questions and opinions to APIL

Speaker: Amanda Stevens, vice-president, APIL

11.35am Session break

11.50am

Workshop C

Utilising rehabilitation in low level injuries to ensure cost savings

- What are the practical solutions currently being employed?
- How can they be successfully implemented into a claims department?

Speaker: Jonathan Cook, chairman, The Treatment Network

Workshop B

Hear from the VRA about the impact their new standards will have on the sector

With vocational rehabilitation ranking highly on many agendas, hear the latest from the Vocational Rehabilitation Association.

- Learn what the implications of the Rehabilitation Standards publication will be for insurers and rehab providers
- Pose your own questions and comments to the VRA

Speaker: Gail Kovacs, vice-chair, VRA

Workshop D

Promoting the use of rehabilitation as a Risk Management tool

Panel Workshop

Rehabilitation is more often than not viewed as reactive rather than proactive. Could it also be promoted as a risk management tool? A panel will address the advantages of rehabilitation in a preventative and damage limitation sense and discuss the benefits of an early intervention approach.

Speaker: Corpore

Exhibition

Coffee and exhibition

Exhibition

Coffee and exhibition

Exhibition

Programme

Afternoon

Victoria Park Plaza, London
14th May 2008

Rehabilitation

First Forum 2008



ROOM 1

ROOM 2

ROOM 3

12.35pm Lunch, networking and exhibition

Lunch and exhibition

1.15pm

Workshop E

Implementing effective cost benefit analysis to achieve accurate ROI calculations

- What are the factors insurers use when calculating CBA?
- Why are there such discrepancies between insurance companies' findings?
- Is it right that CBA should be the main focus of an insurer's decision to implement a rehabilitation programme?

Speaker: **AIG UK**

Workshop F

Is your company at the forefront of the rehabilitation movement? Do you have something to say that our delegates want to hear? An opportunity exists to facilitate and sponsor a workshop.
Contact Thomas Cull on 020 7316 9334 or thomas.cull@incisivemedia.com for more details

Exhibition

2.00pm Session break

Coffee and exhibition

2.15pm

Workshop G

Reducing absence losses through rehabilitative treatment of mental health problems

It is estimated that around 6.5 million working days are lost per year, due to stress and depression; this equates to around £370 million in lost revenue. This session will look at the positive impact rehabilitation could make on these figures.

Speaker: **Karen Hunt, employment services manager, HCML**

Workshop H

Is your company at the forefront of the rehabilitation movement? Do you have something to say that our delegates want to hear? An opportunity exists to facilitate and sponsor a workshop.
Contact Thomas Cull on 020 7316 9334 or thomas.cull@incisivemedia.com for more details

Exhibition

3.00pm Afternoon coffee break

Coffee and exhibition

3.30pm Interactive voting and panel discussion

Delegates will have the chance to vote and have their say on timely issues and topics affecting the rehabilitation sector. The results will be displayed to the audience as the voting happens. Following the interactive voting, carefully selected, expert participants will take part in a discussion panel and will debate relevant and pertinent topics with the chance for delegates to pose their own questions. Confirmed panelists so far include: **Melanie Summers, managing director, AIG Medical & Rehabilitation, Amanda Stevens, vice-president, APIL, Gail Kovacs, vice-chair, VRA**

If you have a question you would like to put to the panel then please email your suggestions to amy.hawes@incisivemedia.com

Exhibition

4.30pm Chairman's summary and prize draw

SAVE Book before 25th April 2008 for £100 discount.

Call **Oliver Nevill** on 020 7316 9405 or book online at postevents.co.uk

PLUS

Group discounts available

Call 020 7316 9405

This event has been Carbon Offset

To register

To register for this event please complete your details

1st Delegate

Title First name
Surname
Job Title
Company
Address

Town Postcode
Tel Fax
Mobile

2nd Delegate

Title First name
Surname
Job Title
Company
Address

Town Postcode
Tel Fax
Mobile
Email

Invoicing Contact - (if different from 1st Delegate)

Title First name
Surname
Job Title
Company
Address

Town Postcode
Tel Fax
Mobile
Email

Please complete your head of department's details

Title First name
Surname
Job Title
Department
How many in your department?
Direct Tel
Email

Mail:

Please complete the form below and send to: **Oliver Nevill,**
Post Events, 32-34 Broadwick Street, London, W1A 2HG
Fax: 020 7316 9563 Telephone: 020 7316 9405
Email: postevents@incisivemedia.com
Web: postevents.co.uk



Be there.

Code: 987654321

Please tick option

If booked by 25th April 2008	If booked after 25th April 2008
<input type="checkbox"/> Standard rate £375+VAT @17.5% (£65.63)=£440.63	<input type="checkbox"/> £475+VAT @17.5% (£88.13)=£558.13
<input type="checkbox"/> Subscriber rate £325+VAT @17.5% (£561.87)=£381.87	<input type="checkbox"/> £425+VAT @17.5% (£74.38)=£499.38
<input type="checkbox"/> Claims Club member rate £300+VAT @17.5% (£52.50)=£352.50	<input type="checkbox"/> £400+VAT @17.5% (£70.00)=£470.00

Payment Details

- I enclose a cheque payable to Incisive Financial Publishing Ltd
 Please debit my amex/visa/mastercard (Please circle the card you wish to use)

Card No

Expiry date / Issue No. (Switch only)

Card billing address (if different from above)

A receipt VAT invoice will be issued once payment has been received.

- Please invoice me at my company address

Signed Date

SAVE

Book by 25th April 2008 for £100 discount.
Call Oliver Nevill on 020 7316 9405 or
book online at postevents.co.uk

• Full payment is required before the event • Please make cheques payable to Incisive Financial Publishing Ltd • If you cancel your booking prior to 21 days before the event, you will receive a refund less a handling and administration charge of £75 + VAT (88.13) • If a cancellation is made after this time, no refund can be made but a substitute delegate will be welcomed. Please advise the organisers of any changes • All cancellations must be made in writing and will be acknowledged in writing by Incisive Media • Due to circumstances which may be beyond its control, Incisive Financial Publishing Ltd reserves the right to make changes to the programme and/or speakers without prior notice • **Special Group discounts:** Please call 020 7316 9405 • Please note, lunch, tea and coffee are included in the cost of the event • **How and why do we carbon offset our events?** Post launched its Underwrite the Future Campaign in 2007 and is committed to supporting environmental causes within the insurance industry. For all Post events, a calculation is now made regarding residual emissions, including in respect of all delegate travel, and an appropriate donation will be made to registered charity PURE the Clean Planet Trust. This donation is used to buy and cancel carbon credits from emissions reduction projects that meet the high quality international standards of the Kyoto Protocol. • Venue Details: Victoria Park Plaza, 239 Vauxhall Bridge Road, London, SW1V 1EQ • For any additional information, please contact the organisers: Post Magazine Events, 1st Floor, 32-34 Broadwick Street, London W1A 2HG, Tel: 020 7316 9405 Email: postevents@incisivemedia.com

- Please tick this box and return this page if you do not want to receive details of special offers which may be of interest to you

Sponsors

Victoria Park Plaza, London
14th May 2008

Rehabilitation
First Forum 2008



EVENT PARTNER



AIG Medical & Rehabilitation Ltd (AIG MR) is an award winning medical and vocational rehabilitation case management company which also provides a full range of attendance and absence management services. Our portfolio of services are available to a wide range of organisations including employers, insurance companies, and solicitors.

As a medical company, we are vigilant about adhering to the requirements associated with medical confidentiality and adherence to our codes of professional conduct and act as advocates for employees and injured parties. Our market leading services have managed many thousands of individuals suffering from illness, accident or injury, in addition to assisting them to return to productive employment.

Our professional employee base of registered nurses, physiotherapists, occupational health & therapy advisors and vocational consultants are deployed at our five branches in the UK, in addition to our large sister branch in Dublin which manages cases across the Republic of Ireland.



We are an award-winning absence, injury and risk provider, blending UK market knowledge and expertise with Australian injury management skills and intellectual property. Backed by two strong strategic investors (Cunningham Lindsey UK and Konekt, Australia) Corpore are uniquely positioned to deliver a broad range of services and a multi-dimensional response to claims resolution.

Our team of highly experienced case managers have access to our Therapy network of over 500 qualified independent treatment professionals throughout the UK.

'Konektiva' – our industry leading IT platform drives our productivity and ensures outcome focused and proactive case management.

We abide by the Rehabilitation Code of Best Practice.



Health & Case Management Ltd (HCML) is an independent, impartial organisation and a driving force in UK rehabilitation case management. We work under the rehabilitation code, providing rehabilitation case management guided by our Medical Advisory Board and innovative use of the bio psychosocial model.

Our Initial Medical Assessment is the foundation of our work and an impartial tool for our insurer and solicitor clients to gain a proportionate understanding of a claimant's injury. Our telephonic assessment is the first step in our impartial and professional approach.

HCML professional Case Managers can then co-ordinate an holistic rehabilitation programme that appreciates medical intervention within a wider context of the individual's needs

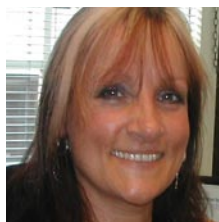
Speakers



Lord McKenzie of Luton, minister for health and work Department of Work and Pensions



Stephen Hadrill, director general, ABI



Melanie Summers, managing director, AIG Medical & Rehabilitation



Amanda Stevens, vice-president, APIL



Jonathan Cook, chairman, The Treatment Network



Gail Kovacs, vice-chair, VRA



Karen Hunt, employment services manager, HCML